

2017 – INAUGURAL SEASON



# AMERICAN DUCHESS™

THE FIRST ALL-SUITE U.S. RIVER CRUISE VESSEL



AMERICAN QUEEN®  
STEAMBOAT COMPANY

Uniquely American River Cruises™

ONE COMMERCE SQUARE  
40 SOUTH MAIN STREET, 21ST FLOOR  
MEMPHIS, TN 38103

TEL (888) 749-5280 | FAX (901) 654-2541 | [WWW.AQSC.COM](http://WWW.AQSC.COM)

## SUITES

**W**ELCOME TO YOUR HOME ABOARD THE LUXURIOUS, ALL-SUITE *AMERICAN DUCHESS* WHERE YOU CAN RELAX IN A LAVISH ATMOSPHERE BRIMMING WITH THE FINEST AMENITIES. PREMIUM LINENS AND PLUSH BEDDING WILL ENSURE YOU ARE WELL-RESTED TO FULLY ENJOY EACH INCLUDED SHORE EXCURSION, HISTORICAL LECTURE AND PHENOMENAL ENTERTAINMENT. EACH ELEGANT SUITE BOASTS A FLAT-SCREEN TV, MINI REFRIGERATOR, KEURIG® COFFEE MAKER AND SAFE FOR YOUR COMFORT AND CONVENIENCE.

### OS OWNER'S SUITES WITH PRIVATE BALCONY

Nestled in the best location with sprawling views of the river, our two-room Owner's Suites will have you feeling like Thomas P. Leathers, one of the wealthiest and most successful steamboat owners of the 19th century. Slide open the glass doors, accessible from both the bedroom and lounge areas, and step out onto your expansive, private balcony to unwind and take in the beauty of riverside America. Adorned with an intimate interior lounging area amply furnished with a queen sofa-bed, cocktail tables and desk, these lavish suites can accommodate up to four guests and epitomize luxurious river cruising. Boasting every essential modern amenity while providing the ultimate in relaxation and pampering, you will relish the many exclusive benefits of our *Commodore Services* while being well attended to by your personal River Butler.

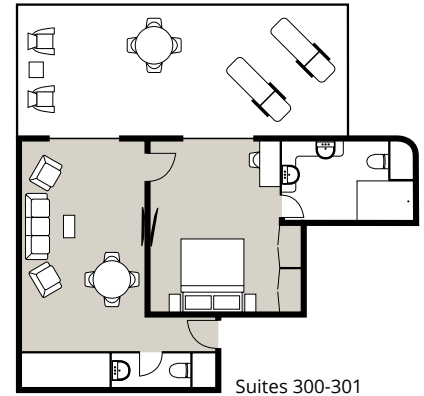
- ★ 550 sq. ft. with Private Balcony
- ★ Queen Bed or Two Twin Beds
- ★ Full Bathroom with Tub/Shower Combination
- ★ Half Bathroom
- ★ Furnished Lounge Area with Sofa-bed and Desk
- ★ Keurig® Coffee Maker and Mini Refrigerator
- ★ 2 Flat-screen TVs
- ★ Sliding Glass Doors to Balcony
- ★ Cabin Deck
- ★ Exclusive *Commodore Services* including personal River Butler



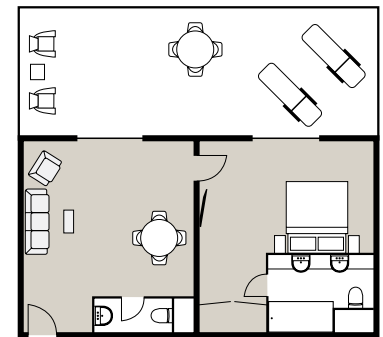
Suite 302 - Living Room



Suite 302 - Bedroom



Suites 300-301

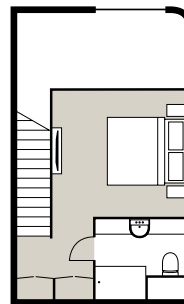


Suite 302

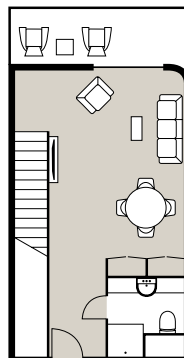
### LFS LOFT SUITES WITH PRIVATE BALCONY – *A first on U.S. rivers!*

Our spacious, elegant Loft Suites are your new home away from home. The lower level features a full bathroom, small dining area, a beautiful lounge section furnished with a queen sofa-bed and desk area, along with sliding doors to access your private balcony where you can unwind and take in the majestic, riverside scenery. Ascend the stairs to the upper level of the loft and you will discover a tranquil retreat with its semi-private bedroom, a full bathroom and plentiful closet space. A large picture window in front of the staircase affords river views from the upper level bedroom. These expansive suites accommodate a variety of travel needs and are the ideal choice for family and friends vacationing together. Boasting every essential modern amenity, you will relish the many exclusive benefits of our *Commodore Services* while being well attended to by your personal River Butler.

- ★ 550 sq. ft. with Private Balcony
- ★ Queen Bed or Two Twin Beds
- ★ 2 Full Bathrooms with Tub/Shower Combination
- ★ Furnished Lounge Area with Sofa-bed and Desk
- ★ Keurig® Coffee Maker and Mini Refrigerator
- ★ 2 Flat-screen TVs
- ★ Sliding Glass Doors to Balcony
- ★ Observation Deck
- ★ Exclusive *Commodore Services* including personal River Butler



200 sq. ft. Upper



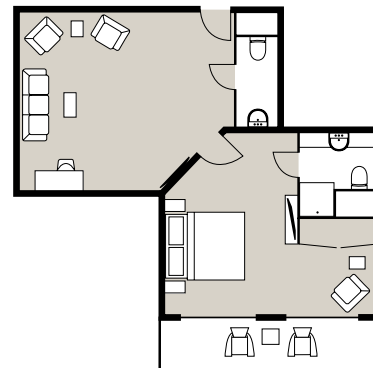
350 sq. ft. Lower



## DS DELUXE SUITES WITH PRIVATE BALCONY

Our two-room Deluxe Suites give you the feeling of a fine estate home. Upon entry you will discover a lounge area with half bath, a queen sofa-bed and small desk area. Off of the lounge area you will enter your private bedroom complete with a full bath, plentiful closet space and sliding glass doors to your private balcony. Indulge in a soothing soak in your tub and then retire to your cozy armchair, prop your feet up and read through the *River Times*, our daily program, to discover the delights that await you.

- ★ 450 sq. ft. with Private Balcony
- ★ Queen Bed or Two Single Beds
- ★ Full Bathroom with Tub/Shower Combination
- ★ Half Bathroom
- ★ 2 Flat-screen TVs
- ★ Furnished Lounge Area with Sofa-bed and Desk
- ★ Keurig® Coffee Maker and Mini Refrigerator
- ★ Sliding Glass Doors to Balcony
- ★ Cabin and Observation Decks



## VS VERANDA SUITES WITH PRIVATE BALCONY

Our Veranda Suites offer the perfect respite from a busy day on the river. Settle in at your desk or relax on the couch, slide open the doors to your private balcony and peacefully watch the river banks of America's heartland drift by. Enjoy the finest amenities in these luxurious accommodations featuring generous closet space and a full bathroom.

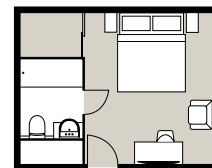
- ★ 240-330 sq. ft. with Private Balcony
- ★ Queen Bed or Two Single Beds
- ★ Full Bathroom with Shower
- ★ Furnished Lounge Area with Sofa and Desk
- ★ Keurig® Coffee Maker and Mini Refrigerator
- ★ Flat-screen TV
- ★ Sliding Glass Doors to Balcony
- ★ Cabin and Observation Decks



## IS INTERIOR SUITES

Surrounded by every modern convenience, you will find your cares disappear within moments upon entry to our welcoming Interior Suites. The airy, open floor plan of these tranquil retreats provides plenty of personal space for you to comfortably move about and feel right at home on the river. Enjoy fine amenities such as ample closet space, a full bathroom and a quaint seating area featuring a desk and side chair.

- ★ 180-200 sq. ft.
- ★ Queen Bed or Two Single Beds
- ★ Full Bathroom with Shower
- ★ Furnished Seating Area with Desk
- ★ Keurig® Coffee Maker and Mini Refrigerator
- ★ Flat-screen TV
- ★ Cabin and Observation Decks



*Note: Suite information provided here is a general representation of the suite categories. Actual room features and amenities may vary. Suites and deckplans are layouts only and may change upon completion of construction.*

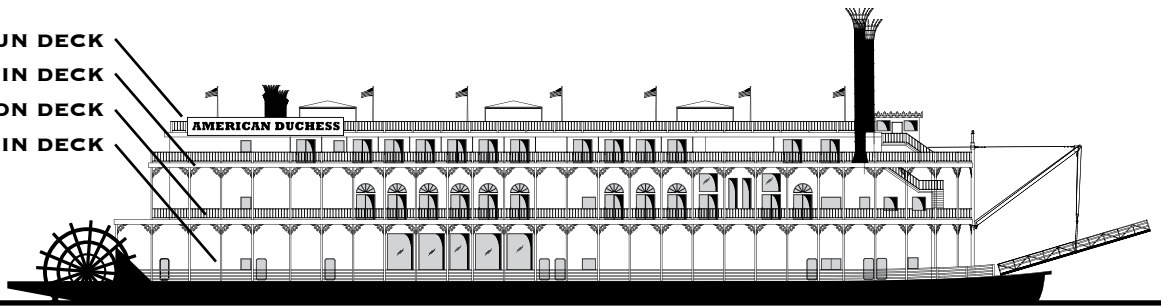


Guests holding reservations for Owner's Suite (OS) and Loft Suite (LFS) accommodations will receive our exclusive *Commodore Services* which include a bottle of wine and fruit basket upon arrival, preferred dining room seating in The Grand Dining Room, reserved seating in our grand theater and an invitation to dine with Senior Officers of the *American Duchess*.

Guests of these elite level suites will also receive the additional services of a friendly River Butler. This service includes a warm welcome with a tour of your suite, unpacking and hanging of clothes in addition to preparation and packing of your luggage, laundry and pressing services along with shoe shine and conditioning, afternoon tea served in your suite, breakfast and dinner served on your private balcony upon request, in-suite pre-dinner canapés and post-dinner sweets, as well as a personal escort to your reserved seating in our grand theater.

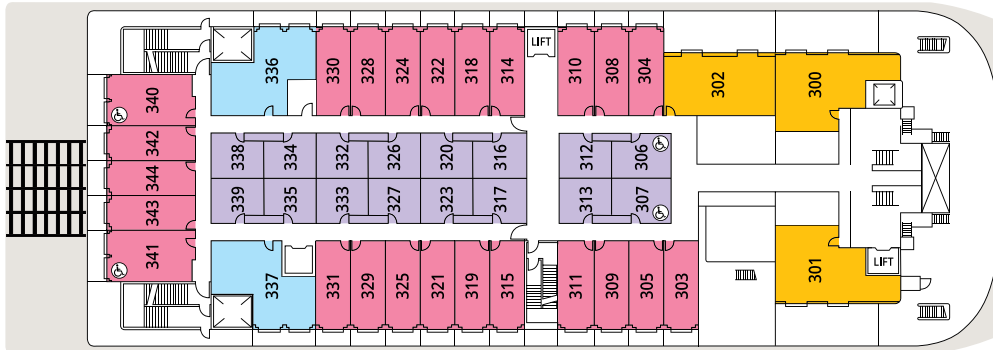
# DECKPLANS

DECK 4 - SUN DECK  
DECK 3 - CABIN DECK  
DECK 2 - OBSERVATION DECK  
DECK 1 - MAIN DECK



## SPECIFICATIONS

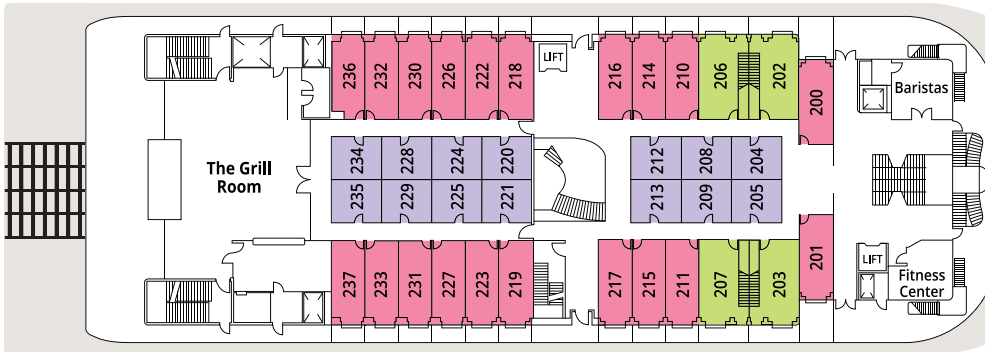
**YEAR BUILT:** HULL (1995); SUPERSTRUCTURE (2017) **LENGTH:** 340 FT.  
**SUITES:** 83 **PASSENGERS:** 166 **CREW:** 80



DECK 3 - CABIN DECK

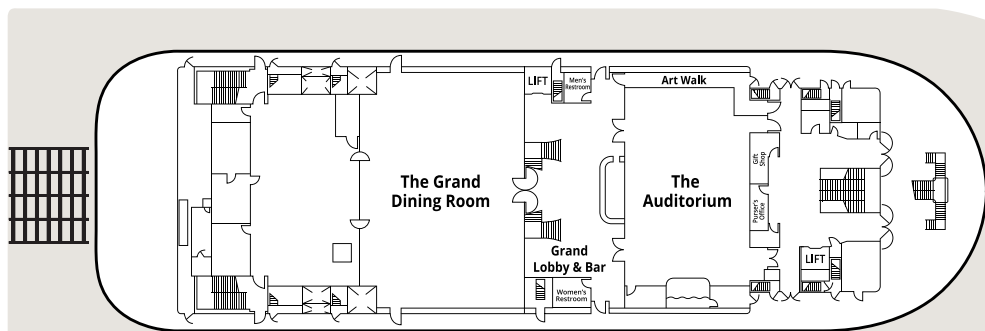
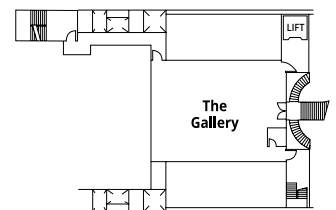
## SUITE CATEGORIES

- OS OWNER'S SUITES**  
550 SQ. FT.
- LFS LOFT SUITES**  
550 SQ. FT.
- DS DELUXE SUITES**  
450 SQ. FT.
- VS VERANDA SUITES**  
240-330 SQ. FT.
- IS INTERIOR SUITES**  
180-200 SQ. FT.



DECK 2 - OBSERVATION DECK

## LOWER MEZZANINE (BETWEEN DECKS 1 AND 2)



DECK 1 - MAIN DECK

Accessible Suites: The *American Duchess*' two lifts/elevators provide access to all decks. ADA Suites 306, 307, 340 and 341 are wheelchair accessible and feature a roll-in shower.

© 2017 American Queen Steamboat Operating Company, LLC 010417